



49th Annual

Last Chance All-Breeds BULL SALE

Johnstone Auction Mart, Moose Jaw
Tuesday, May 25, 2021

START TIME: 12:00 Noon

128 Registered Bulls -Yearlings and 2yr olds

- 30 Red Angus (23 2yr olds, 7 yearlings)
- 59 Black Angus (4 2yr olds, 55 yearlings)
- 7 Simmental (1 2yr olds, 6 yearling)
- 26 Charolais (2 2yr old, 24 yearlings)
- 4 Hereford (1 2yr old, 3 yearlings)
- 2 Maine Anjou (2 yearlings)

Live Online Bidding with DLMS.ca



Auctioneer:	Scott Johnstone	306-631-0767
Ring staff:	Corey Mantell	306-631-1888
	Darwin Rosso.....	306-690-8916
Blockman:	Glen Gabel.....	306-536-1927
Consultant / Order Buyer:	Darwin Rosso.....	306-690-8916

Conducted & Managed by:

Johnstone Auction Mart Ltd.

Box 818, Moose Jaw SK S6H 4P5
PL#914447 DL#111625

Phone: 306-693-4715

Fax: 306-691-6650

www.johnstoneauction.ca

Sale Staff

Contact any off our staff below for confidential assistance for buying your bull, and/or order buying for you if you cannot come to the sale or bid online May 25.



Scott Johnstone,
Auctioneer
306-631-0767



Corey Mantell
Barn Boss
Ringman
306-631-1888



Darwin Rosso
Consultant
Order Buyer
Ringman
306-690-8916

Breed Order / Index

RED ANGUS	- (30)	- Lots	1-30	Page	5
BLACK ANGUS	- (59)	- Lots	31-89	Page	10
SIMMENTAL	- (7)	- Lots	90-96	Page	18
CHAROLAIS	- (26)	- Lots	97-122	Page	20
HEREFORD	- (4)	- Lots	123-126	Page	24
MAIN ANJOU	- (2)	- Lots	127-128	Page	25

EPDs are tools to predict traits of an animal based on genetic traits based on their pedigree. Accuracy varies and, in particular, EPDs **CAN NOT** be compared between breeds—only within a breed. Below are the average EPDs for the breeds.

Simmental	+3.9	+75	+103
Charolais	+0.8	+45	+86
Black Angus	+2.0	+48	+86
Red Angus	+1.1	+36	+63
Hereford	+3.0	+51	+83
Maine Anjou	+2.0	+46	+58

Bull Data Legend
(EPDs are in brackets)

BD = Birth Date
 BW = Birth Weight
 WW = Weaning Weight
 YW = Yearling Weight
 *WW & YW may be actual or adjusted

Bull Buying Options:

Due to Covid Health Restrictions on crowd sizes currently in place, we encourage buyers to come to view the bulls the day prior to the auction.

To buy bulls you can:

1. Come to the auction to buy as usual, wear a mask, and come in smaller groups to limit crowd size.
2. Give any of the sale staff a proxy bid.
3. Have us call you to bid on the phone when your selection(s) are selling.
4. Bid live online with **dlms.ca**

To bid online, register with dlms.ca and get approved to be a bidder, then follow along with the sale and bid on the bulls. If you have any issues registering or being approved, or inquiries on how to bid, contact:

Mark Shologan at 1-780-699-5082



*You can come to pay & pick up your bull right afer you buy him, later in the day, or the next day.

*We will have colour pictures and some videos of the bulls on dlms.ca prior to the sale, and you can watch the bulls live in the ring while the sale is on.

BREED ORDER, Consignor Index Lots

RED ANGUS—Page 5

Knox Land & Livestock 1
LX Angus, Maple Creek..... 2,3,4,5,6,7,8
Storebo Farm..... 9,10,11
Cactus Ridge Red Angus 12,13,14,15,16,17,18,19,20
Cockburn Red Angus..... 21,22,23,24
Deer Range Farms Ltd 25,26,28,29,30

BLACK ANGUS—Page 5

Hi Low Angus 31,32,33,34,35,36
Irving Angus 37,38,39,40,41,42,43,44,45,46
4K Angus 47,48,49,50,51,52
Patterson Angus 53
Bell Angus 54,55,56,57
Coulee Crossing Cattle Co..... 58
Dry Fork Cattle Co..... 59,60,61
Edwards Angus 62,63,64
Kary Family Farms..... 65- -89

SIMMENTAL—Page 5

Patterson Angus 90
Prairie View Simmentals..... 91,92,93
Storebo Farm 94
Deer Range Farms Ltd 95,96

CHAROLAIS—Page 5

Gilliland Brothers Charolais 97--112
Phillips Farms Charolais..... 113,114,115
WPLB Charolais..... 116,117,118
Bar H Charolais 119,120,121,122

HEREFORD—Page 5

Hereford GRLZ 123,124
Blair Athol Farms 125,126

MAINE ANJOU—Page 5

Pick Six Cattle..... 127,128

All bulls are semen tested!

The day sheet will show scrotal measurements and dates tested.

It will be available online at dlms.ca and johnstoneauction.ca

the evening before the sale.

RED ANGUS

Knox Land & Livestock Inc, Briercrest SK

Lot 1

Dane Knox 306-631-6240 kноx.dane1@gmail.com

1	Red Knox Cowboy Kind 11G	2133012	BD	20/02/2019
	DK 11G		BW	90
	Red Pie The Cowboy Kind 343		WW	
	Red Cockburn Cowboy Kind 646D	Red Cockburn River 524X	YW	
	Red WWF Prov Creston 127E	Red Red-Rock Provincial 583Z		
	Red WWF Creston 29Y			

LX Angus, Maple Creek SK

Lots 2-8

Darryl & Lori Forbes 306-558-2161 or 306-661-7774 loriforbes2161@gmail.com

2	Red Forbes Updraft 6G	2119590	BD	06/04/2019
	LX 6G		BW	84(+1.5)
	Red T-K Updraft 24D	Red Ter-Ron Parker 34A	WW	(+28)
	Red Diamond B Roxie 64C	Red T-K Rina 87X	YW	(+54)
		Red North Wind Roger 34X		
	Red Diamond B Missi 54X			

6G is a complete package calving ease bull with that nice big hip, straight top line very smooth through the shoulders recommended for heifers or cows whichever way you like and he will get the job done—1974lbs.



LX 6G



LX 13G

3	Red Forbes Updraft 13G	2119580	BD	09/04/2019
	LX 13G		BW	84(+2.1)
	Red T-K Updraft 24D	Red Ter-Ron Parker 34A	WW	(+37)
	Red Diamond B Missy 21Z	Red T-K Rina 87X	YW	(+68)
		Red Diamond B New Mission 53U		
	Red Diamond B Daisy 68W			

13G long bodied smooth made calving ease bull recommended for heifers and cows—2040lbs

4	Red Forbes Updraft 22G	2119579	BD	17/04/2019
	LX 22G		BW	99(+4.6)
	Red T-K Updraft 24D	Red Ter-Ron Parker 34A	WW	(+43)
	Red Diamond B Missy 13Z	Red T-K Rina 87X	YW	(+78)
		Red Diamond B New Mission 53U		
	Red Diamond B Kitty 12T			

a growth type larger framed individual that should make a nice addition to just about any bull herd sure to raise the weaning weights turning pounds into profit recommended for cows—2040lbs



LX 22G

5	Red Forbes Updraft 14G	2119589	BD	12/04/2019
	LX 14G		BW	97(+3.8)
	Red Ter-Ron Parker 34A		WW	(+45)
	Red T-K Updraft 24D	Red T-K Rina 87X	YW	(+82)
	Red Diamond B Pack Rat 32A	Red Messmer Packer S008		
		Red Diamond B Missi 54X		

Check out his EPD's extra growth here with that nice cherry red color smooth made tons of muscle and shape to give you those deep-sided stylish calves with the nice hair coats - 1952lbs



6	Red Forbes Roxie 17G	2119584	BD	15/04/2019
	LX 17G		BW	92(3.8)
	Red Ter-Ron Parker 34A		WW	(36)
	Red T-K Updraft 24D	Red T-K Rina 87X	YW	(65)
	Red Diamond B Roxie 113B	Red North Wind Roger 34X		
		Red Diamond B Bossy 83U		

A real tank here all packed into a moderate frame, extra wide and deep-sided bull with lots of muscling, solid bodied bull from every angle—1882lbs

7	Red Forbes Updraft 27G	2119595	BD	23/04/2019
	LX 27G		BW	70(-1.1)
	Red Ter-Ron Parker 34A		WW	(+34)
	Red T-K Updraft 24D	Red T-K Rina 87X	YW	(+61)
	Red Diamond B Missy 77Z	Red LIC Mission Statement P27		
		Red Diamond B Micky 93L		

long, deep-sided individual that pushes the scale down out of a larger framed top producing cow recommended for heifers or cows—2014lbs



8	Red Forbes Updraft 28G	2119596	BD	24/04/2019
	LX 28G		BW	70(+0.3)
	Red Ter-Ron Parker 34A		WW	(+25)
	Red T-K Updraft 24D	Red T-K Rina 87X	YW	(+46)
	Red Diamond B Roxy 120Z	Red North Wind Roger 34X		
		Red Diamond B Jr Junior 134W		

28G's dam was one of those cows that puts everything into her calves, extra ribbed bull recommended for cows - 2040lbs

Storebo Farm, Beechy SK

Lots 9-11

Dale & Dwight Storebo 306-859-7779 storebofarm@sasktel.net

9	Red Storebo Jaggar 106H	2160056	BD	30/01/2020
	STOR 106H		BW	85(+0.7)
	Red Triple L Jaggar 18C	Red Six Mile & Co Jaggar 780A	WW	647(+27)
	Red Storebo Veerna 65D	Red Moon Queen 10U	YW	1119(+40)
		Red Bar-E-L Ambush 45A Red Storebo Verna 64X		
10	Red Storebo Denny 85H	2151788	BD	06/02/2020
	STOR 85H		BW	90(+0.8)
	Red VII Dominor 2N	Red Beckton Dominor J655 Z	WW	690(+26)
	Red Storebo Kuruba 75Z	Red Perrin Ms Pat 40G	YW	1184(+42)
		Red 30 Sakic 72W Red 30 Kuruba 101J		
11	Red Storebo Bodacious 56H	2152340	BD	10/01/2020
	STOR 56H		BW	92(+3.1)
	Red TKP Bodacious 693	Red Glacier Logan	WW	693(+29)
	Red Storebo Vernice 68B	Red TKP Lasa Madonna	YW	1170(+44)
		Red Wilbar Recharge 337X Red 30 Vernice 80P		

Cactus Ridge Red Angus, Webb SK

Lots 12-20

Justin Kemick 306-774-7623 cactusridge.angus@gmail.com

12	Red Cactus Ridge 26P Red 8G	2195270	BD	16/02/2019
	JEK 8G		BW	92
	Red Wrights 26P Reddington 55E	Red Fine Line Mulberry 26P	WW	-
	Red Cactus Ridge Queen 2E	Red Wilbar Bayberry 23A	YW	-
		Red Six Mile Sakic 832S Red CR Queen 27Y		
13	Red Cactus Ridge 26P Red 19G	2195256	BD	02/03/2019
	JEK 19G		BW	100
	Red Wrights 26P Reddington 55E	Red Fine Line Mulberry 26P	WW	-
	Red Cactus Ridge Topsy 5Z	Red Wilbar Bayberry 23A	YW	-
		Red SVR Hi Ho 152U Red Spaerman Topsy 637N		
14	Red Cactus Ridge 26P Red 33G	2195266	BD	14/03/2019
	JEK 33G		BW	88
	Red Wrights 26P Reddington 55E	Red Fine Line Mulberry 26P	WW	-
	Red Cactus Ridge Blockanna 7B	Red Wilbar Bayberry 23A	YW	-
		Red K F Real Deal 14Z Red CR Blockanna 42X		
15	Red Cactus Ridge Crimson 11G	2195248	BD	21/02/2019
	JEK 11G		BW	84
	Red Cactus Ridge Crimson 6A	Red BCC Crimson Jewels 102U	WW	-
	Red CR Maid 3X	Red CR Jinny 13Y	YW	-
		Red SVR Hi Ho 152U Red Deer Range Maid 530T		
16	Red Cactus Ridge Crimson 25G	2195260	BD	10/03/2019
	JEK 25G		BW	86
	Red Cactus Ridge Crimson 6A	Red BCC Crimson Jewels 102U	WW	-
	Red Cactus Ridge Blockanna 24A	Red CR Jinny 13Y	YW	-
		Red Cactus Ridge Sandstone 10W Red CR Blockanna 42X		
17	Red Cactus Ridge Crimson 39G	2195259	BD	21/03/2019
	JEK 39G		BW	85
	Red Cactus Ridge Crimson 6A	Red BCC Cimson Jewels 102U	WW	-
	Red Cactus Ridge Cleopatra 13A	Red CR Jinny 13Y	YW	-
		Red CR Hi Ho 10X Red Jewel Miss Cleopatra 10S		

18	Red Cactus Ridge Nebula 37G	2195258	BD	17/03/2019
	JEK 37G		BW	84
	Red Flying K Nebula 89Z		WW	-
	Red Cactus Ridge Nebula 34B	Red CR Lady 3S	YW	-
	Red Cactus Ridge Stout Lady 8A	Red Diamond T Hips Stout 107U Red CR Lady 3R		

19	Red Cactus Ridge Detour 10G	2195269	BD	20/02/2019
	JEK 10G		BW	88
	Red WWF Detour 19C	Red Lazy MC CC Detour 2W Red WWF Wizard Anexa 143A	WW	-
	Red Blake's MS Brandy 38B	Red Howe Finest Tradition 20W Red Howe MS Brandy 121T	YW	-

20	Red Cactus Ridge Real Deal 40G	2195265	BD	25/03/2019
	JEK 40G		BW	90
	Red Cactus Ridge Real Deal 1D	Red K F Real Deal 14Z Red Cactus Ridge Cleo 19Z	WW	-
	Red Cactus Ridge Lady 6B	Red Cactus Ridge Sandstone 10W Red Cactus Ridge Lady 13Z	YW	-

Cockburn Red Angus, Briercrest SK **Lots 21-24**
Ward Cockburn 306-631-9490 wardc123@hotmail.com

21	Red Cockburn Fusion 72H	2192671	BD	13/02/2020
	CWJ 72H		BW	70
	Red Flying K Fusion 90F	Red Andras Fusion R236 Red Flying K Ruth 83B	WW	-
	Red Cockburn Cora 8055F	Red Pie Specialist 430 Red Cockburn Cora 599B	YW	-

22	Red Cockburn Tankard 73H	2191929	BD	13/02/2020
	CWJ 73H		BW	86(+1.9)
	Red Allison Tankard 42E	Red U-2 Justified 235Z Glesbar Miss Burgess 42W	WW	(+46)
	Red Jacobson Rita 6139	Red 5L Out In Front 1701-457B Red Jacobson Rita 2012	YW	(+82)

23	Red Cockburn Exclusive 116H	2196742	BD	15/03/2020
	CWJ 116H		BW	80
	Red Cockburn Exclusive 207F	Red Pie One Of A Kind 352 Red Wilbar Cora 443P	WW	-
	Red Cockburn Cora 730E	Red Cockburn Heavy Duty 518C Red Cockburn Cora 140Y	YW	-

24	Red Cockburn Exclusive 123H	2196744	BD	26/03/2020
	CWJ 123H		BW	67
	Red Cockburn Exclusive 207F	Red Pie One Of A Kind 352 Red Wilbar Cora 443P	WW	-
	Red Cockburn Lasie 506C	Red Cockburn Ribeye 308U Red Cockburn Lasie 15R	YW	-

Deer Range Farms Ltd., Stewart Valley SK **Lots 25-30**
Travis Olson 306-741-9275 tkolson@sasktel.net

25	Red Deer Range Buck 308G	2121739	BD	04/04/2019
	DRF 308G		BW	88(+2.1)
	Red Flying K Buckshot 68C	Red Flying K Neptune 28Z Red Flying K Dynasty 178W	WW	677(+27)
	Red Deer Range Cherokee 86D	Red Deer Range Pacer 988Z Red Deer Range Cherokee 990X	YW	(+42)

26	Red Deer Range Stone 44G	2184343	BD	22/04/2019
	DRF 44G		BW	94(+3.1)
	Red Deer Range Alain 146D	Red Deer Range Alain 16Z Red Deer Range Cherok 964Y	WW	761(+42)
	Red Deer Range Lucy 957W	Red Six Mile Sakic 832S Red Deer Range Lucy 545T	YW	(+62)



Lot 28

28	Red Deer Range Buck 236G	2122246	BD	12/04/2019
	DRF 236G		BW	98(+3.8)
	Red Flying K Neptune 28Z		WW	752(+39)
Red Flying K Buckshot 68C	Red Flying K Dynasty 178W		YW	(+62)
Red Deer Range Shawnee 79B	Red Crowfoot Moonshine 2166Z			
	Red Deer Range Shawnee 974X			
29	Red Deer Range Alain 376G	2190936	BD	06/04/2019
	DRF 376G		BW	87(+0.8)
	Red Deer Range Alain 16Z		WW	(+35)
Red Deer Range Alain 146D	Red Deer Range Cherok 964Y		YW	(+54)
Red Deer Range WYE 87A	Red Deer Range Crash 982W			
	Red Deer Range WYE 991X			



Lot 29

30	Red Deer Range Buckshot 129G	2121736	BD	02/04/2019
	DRF 129G		BW	93(+3.2)
	Red Flying K Neptune 28Z		WW	719(+34)
Red Flying K Buckshot 68C	Red Flying K Dynasty 178W		YW	(+49)
Red Deer Range Cherokee 846Y	Red Deer Range Dline 800W			
	Red Deer Range Cherokee 459R			

BLACK ANGUS

Hi Low Angus, Lumsden SK

Lots 31-36

Dan Howell 306-581-7606 hilowangus@sasktel.net

31	Hi Low Reflection 18G	2107789	BD	04/02/2019
	HTD 18G		BW	74(-0.4)
	Anderson Reflection 6106	MCATL Reflection 120-577	WW	655(+34)
	Coulee Crossing Lassie 46E	LLB Beauty 9107U Soo Line Thor 2064 Remington Lassie 94Y	YW	1149(+61)
32	Hi Low Investment 37G	2108150	BD	13/02/2019
	HTD 37G		BW	89(+1.0)
	Sitz Investment 660Z	Connealy Final Product	WW	619(+45)
	Hi Low Eston Anne 87A	Sitz Ellunas Elite 656T Hilow Tiger 1X Hilow Eston Anne 87W	YW	1265(+92)
33	Keys Eliminator 345G	2098596	BD	27/01/2019
	KEYS 345G		BW	78(+1.4)
	Hilow Eliminator 58C	Peak Dot Eliminator 396Z	WW	741(+41)
	Kays Black Lucy 45C	Hilow Eston Anne 64W Bell Pioneer 25A Bell Black Lucy 45Y	YW	1300(+72)
34	Hi Low Reflection 31H	2157476	BD	14/02/2020
	HTD 31H		BW	77(+0.1)
	Anderson Reflection 6106	MCATL Reflection 120-577	WW	745(+50)
	Hi Low Lady Ann 6F	LLB Beauty 9107U KG Solution 0018 Hilow Lady Ann 76C	YW	(+88)
35	Hi Low 3rd Dimension 23H	2180163	BD	12/02/2020
	HTD 23H		BW	87(+2.0)
	Keys 3rd Dimension 230F	JINDRA 3rd Dimension	WW	688(+46)
	Hilow Pride 17C	Keys Eugenie Erica 30B Mohnen South Dakota 402 Hilow Pride 62U	YW	(+77)
36	Hi Low 3rd Dimension 74H	2189616	BD	03/03/2020
	HTD 74H		BW	89(+1.5)
	Keys 3rd Dimension 230F	JINDRA 3rd Dimension	WW	774(+49)
	Hi Low Marg 62B	Keys Eugenie Erica 30B DMM Dynasty 03G Bar-E-L Marg 55U	YW	(+81)

Irving Angus, Lumsden SK

Lots 37-46

John M. & Keri Irving 306-587-7997 john.irving@pvdsd.ca

37	Irving Angus Black Bear 7H	2139469	BD	20/02/2020
	IRV 7H		BW	88
	Irving Angus Kodiak 13B	SVR Kodiak 406Y	WW	-
	Irving Angus Rosebud 34B	IRV Lady McHenry 12X SVR Super Duty 300Y IRV Rosebud 12Y	YW	-
38	Irving Angus Koda 9H	2139580	BD	21/02/2020
	IRV 9H		BW	85
	Irving Angus Kodiak 13B	SVR Kodiak 406Y	WW	-
	Irving Angus Lady Lee 39C	IRV Lady McHenry 12X SVR Super Duty 300Y IRV Ideal Lady Lee 14X	YW	-

39	Irving Angus Kodiak 13H	2139461	BD	23/02/2020
	IRV 13H		BW	86
	SVR Kodiak 406Y		WW	-
	Irving Angus Kodiak 13B	IRV Lady McHenry 12X	YW	-
	Irving Angus Rosegay 38Z	Crescent Creek Ideal 105U Callamere Rosegay 15R		
40	Irving Angus Engineer 16H	2139596	BD	25/02/2020
	IRV 16H		BW	77
	Willowview Pioneer 6X		WW	-
	Northern View Pioneer 20Z	Kembar Lucy 20N	YW	-
	Irving Angus Lady McHenry 14F	SVR Dispatcher 414D Irving Angus Lady McHenry 6C		
41	Irving Angus Pioneer 18H	2139561	BD	26/02/2020
	IRV 18H		BW	76
	Willowview Pioneer 6X		WW	-
	Northern View Pioneer 20Z	Kembar Lucy 20N	YW	-
	Irving Angus Rosebud 3C	SVR Super Duty 300Y IRV Rosebud 17W		
42	Irving Angus Kodiak 26H	2139560	BD	03/03/2020
	IRV 26H		BW	76
	SVR Kodiak 406Y		WW	-
	Irving Angus Kodiak 13B	IRV Lady McHenry 12X	YW	-
	Irving Angus Lady McHenry 44B	SVR Super Duty 300Y IRV Ultra Lady McHenry 20S		
43	Irving Angus Pioneer 27H	2139466	BD	04/03/2020
	IRV 27H		BW	72
	Willowview Pioneer 6X		WW	-
	Northern View Pioneer 20Z	Kembar Lucy 20N	YW	-
	Irving Angus Rosebud 8B	SVR Kodiak 406Y IRV Rosebud 1W		
44	Irving Angus Kodiak 34H	2139585	BD	14/03/2020
	IRV 34H		BW	82
	SVR Kodiak 406Y		WW	-
	Irving Angus Kodiak 13B	IRV Lady McHenry 12X	YW	-
	Irving Angus Pride 28D	SVR Super Duty 300Y Irving Angus Pride 39Z		
45	Irving Angus Islander 35H	2139453	BD	16/03/2020
	IRV 35H		BW	86
	SVR Kodiak 406Y		WW	-
	Irving Angus Kodiak 13B	IRV Lady McHenry 12X	YW	-
	IRV Ideal Lady Lee 14X	Crescent Creek Ideal 105U IRV Lady Lee 3R		
46	Irving Angus Pepper Patch 37H	2139582	BD	21/03/2020
	IRV 37H		BW	78
	SVR Net Worth 322B		WW	-
	SVR Dispatcher 414D	SVR Annie 337S	YW	-
	Irving Angus Lady Supreme 3D	Northern View Pioneer 20Z Irving Angus Ideal Lady 12Z		

4K Angus, Earl Grey SK**Lots 47-52**

Tim & Paulette Keys 306-731-7995 pkeys@sasktel.net

47	Keys Conversation 18H	2158549	BD	30/01/2020
	KEYS 18H		BW	85(+1.2)
	SAC Conversation	Silveiras Conversation 8064	WW	628(+35)
	Keys Eugenie Erica 513C	LaFlins Farrah 0250	YW	1034(+67)
		Bell Pioneer 25A		

Keys Eugenie Erica 53A

A heifer bull for larger framed heifers. Actual April 2 weight 1238 lbs

48	Keys Entice 22H	2158476	BD	01/02/2020
	KEYS 22H	Twin	BW	78(+1.5)
	MOGCK Entice	Syngen Enhance	WW	647(+54)
	Bell Eugenie Erica 53Y	MOGCK Erica 2255	YW	1115(+100)
		Bell Ribstone 53U		

Bell Eugenie Erica 30W

A heifer bull. Actual April 2 weight 1256 lbs

49	Keys Eliminator 28H	2141504	BD	16/02/2020
	KEYS 28H		BW	88(+3.0)
	HiLow Eliminator 58C	Peak Dot Eliminator 396Z	WW	619(+39)
	Bell Black Lucy 20C	HiLow Eston Anne 64W	YW	1069(+72)
		Northern View Upward 92Y		

Bell Black Lucy 16Z

A heifer bull. Actual April 2 weight 1124 lbs

50	Keys Capitalist 14H	2158459	BD	28/01/2020
	KEYS 34H		BW	84(+2.3)
	Conneally Capitalist 028	SAV Final Answer 0035	WW	662(+53)
	Keys Blackclass 43B	Prides Pita of Conanga 8821	YW	1114(+87)
		HiLow New Elixir 6X		

Bell Blackclass 43Z

A heifer bull. Actual April 2 weight 1328 lbs

51	Keys Eliminator 36H	2141507	BD	29/02/2020
	KEYS 36H		BW	92(+2.2)
	HiLow Eliminator 58C	Peak Dot Eliminator 58C	WW	678(+40)
	Keys Blackclass 43D	HiLow Eston Anne 64W	YW	1057(+71)
		Jindra Double Vision		

Bell Blackclass 43Z

A cow bull. Actual April 2 weight 1162 lbs

52	Keys Acclaim 26G	2111370	BD	24/01/2019
	KEYS 26G		BW	66(+1.4)
	Jindra Acclaim	Jindra 3rd Dimension	WW	527(+50)
	Bell Blackcap 26Y	Jindra Blackbird Lucy 1111	YW	994(+99)
		Bell Net Return 3U		

Bell Blackcap 31P

A heifer bull. Actual March 2 weight 1632 lbs

Patterson Angus, Moose Jaw SK**Lot 53**

Dan Patterson 306-799-4600 champdr@sasktel.net

53	Patterson Accuracy 007	2170396	BD	09/03/2020
	DCP 7H		BW	78(+0.2)
	Linz Accuracy 2397-6006	R B Active Duty 0010X	WW	622(+44)
	Patterson Pride 111	SAV May 2397	YW	(+84)
		Nichols Stout T152		

HiLow Pride 38U

Bell Angus, Pense SK**Lots 54-57**

Ken Bell 306-691-7792 ken.bell@sasktel.net

54	Bell Entice 5H	2161549	BD	26/01/2020
	NBK 5H		BW	86(+2.8)
	MOGCK Entice	Sydggen Enhance	WW	839(+60)
	Bell Blackbird 16Y	MOGCK Erica 2255	YW	(+105)
		Bell Ribstone 53U Bell Blackbird 51U		
55	Bell Sure Fire 24H	2161580	BD	11/02/2020
	NBK 24H		BW	75(+1.7)
	GAR Sure Fire	Connealy In Sure 8524	WW	821(+47)
	Bell Blackclass 42F	Chair Rock 5050 GAR 8086	YW	(+86)
		Northern View Rip 17D Bell Blackclass 20X		
56	Bell Effective 33H	2161552	BD	21/02/2020
	NBK 33H		BW	90(+3.9)
	Northern View Effective 88B	Schiefelbein Effective 61	WW	833(+48)
	Bell Gretchen 72Y	Northern View Tibbie 83T	YW	(+85)
		Bell Titan 29W Sunny Grove Gretchen 59T		
57	Bell Boomer 42H	2161572	BD	03/03/2020
	NBK 42H		BW	82(+2.3)
	Northern View Rip 17D	Windy Willows Boomer 98B	WW	886(+50)
	Bell Black Lucy 36E	Skyebrook Pride Dolly 13B	YW	(+81)
		Creekview Ideal 4Y Bell Black Lucy 27Y		

Coulee Crossing Cattle Company, Moose Jaw SK**Lot 58**

Sandra Jeffery 306-631-1928 couleecrossingcc@gmail.com

58	Coulee Crossing Lucky Boy 116G	2145986	BD	28/12/2019
	LJS 116G		BW	89(+2.2)
	Soo Line Motive 9016	HF Kodiak 5R	WW	677(+57)
	Coulee Crossing Lucy 11C	TLA Beauty 5R	YW	1316(+100)
		SAV Radiance 0801 Wilbar Lucy 244R		
<p>A Motive son that is deep deep bodied, big testicles, excellent hair, long bodied, very moderate framed and thick topped. He is all bull and will produce heavy weight calves. His dam is long, deep, thick and has a bit more frame. Her only daughter was sold in the 2019 Harvest Classic Angus sale for a 4H project. Halter broke and parentage verified.</p>				
			Lot 58	

59	Dry Fork Hoochie DFR 77H	2137953	BD	21/01/2020
			BW	80(-0.2)
			WW	566(+37)
			YW	(+65)

Dry Fork Brooks HF Instigator 115B
 Glendor Errolline 77Z Brooking Terra 4018
 Merit 8088
 Glendor Errolline 36U

77H has a long, wide topline and carries good muscle expression in his hind quarters. He comes from a cow that is very deep bodied with good length and to top it off has a balanced udder



60	Dry Fork Heat DFR 28H	2138427	BD	08/02/2020
			BW	89(+1.4)
			WW	652(+45)
			YW	(+79)

Crescent Creek Momentum 141E Chapman Memento 3589A
 Dry Fork Terra Crescent Creek Heroine 64Z
 S Titlest 1145
 Brooking Terra 4018

28H is a correctly built Momentum son that is almost a replica of his father. 28H is from a young Titlest female that has lots of volume, neat udder and is a maternal sister to our Brook's herdsire!



61	Dry Fork Hellcat DFR 84H	2134404	BD	11/01/2020
			BW	97(+1.5)
			WW	557(+35)
			YW	(+60)

Dry Fork Brooks HF Instigator 115B
 Sand Bar Miss Quality 84S Brooking Terra 4018
 Prairielane Ideal
 Sandy Bar Miss Quality 8L

84H is the last chance to purchase a direct offspring off Sandy Bar Miss Quality. Her hip went at the age of 14 while raising this guy. 84H is a smooth traveling, hairy, deep bull with bloodlines for strong production



Edwards Angus, Craik SK**Lots 62-64**

Laird Edwards 306-567-7456 lredwards@sasktel.net

62**Edwards Firebrand 252H**

2146811

EDW 252H

Brooking Firebrand 6068
Edwards Princess Annie 252ZBrooking Bank Note 4040
Brooking Annie K 390
PVF Windfall SCC 9005
Isla Bank Princes Annie 52L

BD	14/01/2020
BW	98(+5.2)
WW	753(+63)
YW	(+104)

**Lot 62****63****Edwards Fastrac 271H**

2170428

EDW 271H

Young Dale Fastrac 40F
Edwards Blackbird 271YYoung Dale Hi Definition 185B
Young Dale Blackbird 44A
HF Swagger 75W
HF Blackbird 171T

BD	17/02/2020
BW	92(+4.2)
WW	659(+49)
YW	(+89)

**Lot 63****Lot 64****64****Edwards Payweight 63H**

2146800

EDW 63H

Basin Payweight 1682
Edwards Black Miss 63BBasin Payweight 006S
21AR O Lass 7017
Crowfoot Macho 4549P
XO Crowfoot CJ Black Miss 1563

BD	12/01/2020
BW	82(+1.7)
WW	645(+48)
YW	(+88)

Kary Family Farm, Montmartre SK**Lots 65-89**

Gerald Kary 306-424-7676 kary.gerald@gmail.com

65**Kary's Harrison 1H**

2151625

GLK 1H

Merit Torch 7015E
Gerlei Lady 102FHF Unit 14C
Merit Socialite 5036C
Gerlei 2B
Gerlei Lady 67D

BD	21/01/2020
BW	74(+0.5)
WW	(+45)
YW	(+84)

66**Kary's Hugo 3H**

2151627

GLK 3H

Werner Flat Top 4136
Gerlei Rosebud 17BConnealy Black Granite
Werner Lady 0304
Mar Mac Tiger 159Y
Gerlei Rosebud 2R

BD	25/01/2020
BW	81(-0.2)
WW	(+47)
YW	(+93)

67	Kary's Harper 5H	2154022	BD	26/01/2020
	GLK 5H		BW	89(+2.2)
	Merit 77X		WW	(+43)
	Merit High Mark 6030D	Merit Jilt 1097	YW	(+78)
	Gerlei Heroine 66Z	DBRL Ambush 25X		
		Gerlei Heroine 64X		
68	Kary's Hayden 6H	2154023	BD	28/01/2020
	GLK 6H		BW	87(+2.2)
	HF Syndicate 213Z		WW	(+50)
	HF Carbon Copy 217F	HF Miss Erica 141Z	YW	(+90)
	Gerlei Princess 19E	Freyburn Genesis 4A		
		Gerlei Princess 50T		
69	Karys Houston 8H	2154403	BD	29/01/2020
	GLK 8H		BW	84(+1.9)
	Exar Denver 2002B		WW	(+55)
	Quaker Hill Manning 4EX9	Quaker Hill Blackcap 0A32	YW	(+96)
	Gerlei Heroine 104D	Gerlei 2B		
		Gerlei Heroine 49B		
70	Kary's Harley 11H	2154405	BD	30/01/2020
	GLK 11H		BW	86(+1.7)
	Exar Denver 2002B		WW	(+55)
	Quaker Hill Manning 4EX9	Quaker Hill Blackcap 0A32	YW	(+93)
	Gerlei Happy 55D	Mar Mac Tiger 159Y		
		Gerlei Happy 13A		
71	Kary's 13H	2154027	BD	31/01/2020
	GLK 13H		BW	90(+2.8)
	Stuart Youngman 37Y		WW	(+52)
	Gerlei 70E	Gerlei Mayflower 34Z	YW	(+92)
	Gerlei Princess 3C	SAV Pioneer 7301		
		Gerlei Princess 6P		
72	Kary's Hayes 15H	2154407	BD	31/01/2020
	GLK 15H		BW	87(+2.9)
	Exar Denver 2002B		WW	(+62)
	Quaker Hill Manning 4EX9	Quaker Hill Blackcap 0A32	YW	(+107)
	Gerlei Queen 64B	Stuart Youngman 37Y		
		Gerlei Queen 17R		
73	Kary's Hank 16H	2154028	BD	01/02/2020
	GLK 16H		BW	84(+1.7)
	HF Syndicate 213Z		WW	(+48)
	HF Carbon Copy 217F	HF Miss Erica 141Z	YW	(+85)
	Gerlei Queen M 5A	SAV Pioneer 7301		
		Gerlei Queen M 17S		
74	Kary's 22H	2154038	BD	03/02/2020
	GLK 22H		BW	82(+1.0)
	HA Cowboy Up 540S		WW	(+38)
	HF Ozark 160F	HF Tibbie 77Z	YW	(+76)
	Gerlei Rosebud 41B	Stuart Youngman 37Y		
		HiLow Royal Rosebud 29L		
75	Kary's 25H	2154409	BD	04/02/2020
	GLK 25H		BW	90(+2.9)
	Exar Denver 2002B		WW	(+56)
	Quaker Hill Manning 4EX9	Quaker Hill Blackcap 0A32	YW	(+101)
	Gerlei Queen 76E	Stuart Youngman 37Y		
		Gerlei Queen 144Y		
76	Kary's 26H	2154042	BD	04/02/2020
	GLK 26H		BW	80(+0.4)
	HF Syndicate 213Z		WW	(+43)
	HF Carbon Copy 217F	HF Miss Erica 141Z	YW	(+78)
	Gerlei Blackclass 84E	Gerlei Genesis 6C		
		Gerlei Blackclass 97Z		

77	Kary's 29H	2154047	BD	07/02/2020
	GLK 29H		BW	79(+1.4)
	HF Carbon Copy 217F	HF Syndicate 213Z	WW	(+40)
	Gerlei Lass 23E	HF Miss Erica 141Z	YW	(+69)
		Merit Big Iron 5071		
		Gerlei Lass 20R		
78	Kary's 33H	2154163	BD	09/02/2020
	GLK 33H		BW	87(+2.0)
		Merit 77X	WW	(+43)
	Merit High Mark 6030D	Merit Jilt 1097	YW	(+80)
	Gerlei Queen 74C	Stuart Youngman 37Y		
		Gerlei Queen 28X		
79	Kary's Hulk Hogan 35H	2154165	BD	10/02/2020
	GLK 35H		BW	92(+3.2)
		HA Cowboy Up 5405	WW	(+61)
	HF Ozark 160F	HF Tibbie 77Z	YW	(+99)
	Gerlei Mayflower 34Z	Young Dale Touchdown 36M		
		Gerlei Mayflower 5N		
80	Kary's 39H	2154294	BD	11/02/2020
	GLK 39H		BW	81(+1.6)
		HF Syndicate 213Z	WW	(+46)
	HF Carbon Copy 217F	HF Miss Erica 141Z	YW	(+84)
	Gerlei Queen 88E	Gerlei 2B		
		Gerlei Queen 74C		
81	Kary's 41H	2154296	BD	11/02/2020
	GLK 41H		BW	85(+2.4)
		Merit 77X	WW	(+38)
	Merit High Mark 6030D	Merit Jilt 1097	YW	(+76)
	Gerlei Lady 41D	Mar Mac Tiger 159Y		
		Gerlei Lady 16Z		
82	Kary's 42H	2154297	BD	12/02/2020
	GLK 42H		BW	80(+1.3)
		Merit 77X	WW	(+40)
	Merit High Mark 6030D	Merit Jilt 1097	YW	(+83)
	Gerlei QH 74D	Stuart Youngman 37Y		
		Gerlei QH 46S		
83	Kary's 48H	2154676	BD	14/02/2020
	GLK 48H		BW	95(+3.5)
		Merit 77X	WW	(+43)
	Merit High Mark 6030D	Merit Jilt 1097	YW	(+74)
	Gerlei Mayflower 53X	Bar-E-L Santana 186S		
		Gerlei Mayflower 10R		
84	Kary's 49H	2154678	BD	14/02/2020
	GLK 49H		BW	89(+1.9)
		HA Cowboy Up 5405	WW	(+52)
	HF Ozark 160F	HF Tibbie 77Z	YW	(+87)
	Gerlei Mayflower 69B	Stuart Youngman 37Y		
		Gerlei Mayflower 53X		
85	Kary's 50H	2154679	BD	17/02/2020
	GLK 50H		BW	86(+1.6)
		Merit 77X	WW	(+46)
	Merit High Mark 6030D	Merit Jilt 1097	YW	(+81)
	Gerlei Queen 103Z	DBRL Ambush 25X		
		Gerlei Queen 79X		
86	Kary's 64H	2157919	BD	27/02/2020
	GLK 64H		BW	83(+0.7)
		Merit 77X	WW	(+41)
	Merit High Mark 6030D	Merit Jilt 1097	YW	(+72)
	JL Blackbird 5300	SAV 707 Rito 1439		
		JL Blackbird 2328		

87	Kary's 73H	2157928	BD	05/03/2020
	GLK 73H		BW	81(+1.6)
	Merit 77X		WW	(+56)
	Merit High Mark 6030D Gerlei Blackcap 20C	Merit Jilt 1097 Freyburn Ignitor 88Z Gerlei Blackcap	YW	(+107)

88	Kary's 79H	2161485	BD	09/03/2020
	GLK 79H		BW	92(+2.6)
	HF Ozark 160F Gerlei Rosebud 15B	HA Cowboy Up 5405 HF Tibbie 77Z Freyburn Ignitor 88Z Gerlei Rosebud 121Z	WW	(+66)
			YW	(+118)

89	Kary's 84H	2161488	BD	12/03/2020
	GLK 84H		BW	85(+1.8)
	Merit 77X		WW	(+46)
	Merit High Mark 6030D Gerlei Queen M 114D	Merit Jilt 1097 Mar Mac Tiger 159Y Gerlei Queen M 5A	YW	(+89)

SIMMENTAL

Patterson Angus, Moose Jaw SK Lot 90

Dan Patterson 306-799-4600 champdr@sasktel.net

90	Red Patterson Hybrid	1348316	BD	20/03/2019
	PDC 48G	75% Red Polled	BW	81(+1.7)
	MRL To The Max 70Z		WW	753(+67)
	BJL Mr Douglas 108D Red Patterson Hybrid 648	BJL 3W Springcreek Crosby 189Z Anan (Angus)	YW	(+95)

Prairie View Simmentals, Stalwart SK Lots 91-93

Clifford & June Nelson 306-963-2517 or 306-535-2475(c) cjnelson@sasktel.net

91	PVSS Homerun 29H	PG1305619	BD	31/01/2020
	PVSS 29H	PB Red Polled	BW	101(+2.9)
	Swan Lake Breaker 19		WW	741(+65)
	Swan Lake Jail Break 98E PVSS Zira 13Z	Swan Lake No Secret 5B Sunny Valley Umpire 62U PVSS Tanya 22T	YW	1138(+97)

Polled, solid red, with good maternal EPDs. Smaller framed, stout made, good tracking bull from a RWF goggled eyed cow with an excellent udder!



Lot 91



Lot 92

92	PVSS Headliner 16H	BPG1305574	BD	19/01/2020
	PVSS 16H	PB Black Polled	BW	100(+1.9)
	Swan Lake Breaker 19		WW	801(+76)
	Swan Lake Jail Break 98E PVSS Serenity 40C	Swan Lake No Secret 5B PVSS The Force 4Y PVSS Serenity 24S	YW	1395(+108)

Polled, solid black, most EPDs above average including top 10-15% in all maternal categories. Headliner has always been a favourite with his eye appeal, natural performance, and quiet nature. From a solid black, excellent uddered, heavy milking, super quiet cow!

93	PVSS Hardcopy 10H			PG1305567	BD	15/01/2020
	PVSS 10H	PB	Red	Polled	BW	100(+2.6)
	Swan Lake Break 98E	Swan Lake Breaker 19			WW	770(+79)
	PVSS Tina 20B	KN WS Beef King W107			YW	1143(+107)
		PVSS Tina 10T				

Polled, solid red, with EPDs above average in all but 2 categories. In the top 4% for maternal calving ease. Out of a big volumed, blaze faced cow that has one of our best 2021 heifers on her!



Lot 93

Storebo Farm, Beechy SK **Lot 94**

Dale & Dwight Storebo 306-859-7779 storebofarm@sasktel.net

94	Dess Game Face 141H			BPG1332782	BD	03/02/2020
	DESS 141H	PB	Black	Polled	BW	102(+5.1)
	LFE Game Face 338F	LFE Cash 386D			WW	772(+77)
	DESS Emma 133E	LFE BS Amber 60D			YW	(+110)
		MRL Chicago 140C				
		DESS Identity 134B				

Deer Range Farms Ltd., Stewart Valley SK **Lots 95-96**

Travis Olson 306-741-9275 tkolson@sasktel.net

95	Deer Range Slack 825H			BPG1318915	BD	24/04/2020
	BAV 825H	PB	Black	Polled	BW	93(+4.9)
	Dess Pthfinder 6E	Dess Pathfinder 3R			WW	817(+83)
	Deer Range Ms 822E	SSBSF Brilynn 26B			YW	(+116)
		Deer Range Poplar 820C				
		Deer Range Ms 811A				

96	Deer Range Deputy 898H			PG1330529	BD	26/03/2020
	BAV 898H	PB	Red	Horned	BW	77(+1.0)
	Deer Range Sheriff 826F	Kuntz Sheriff 8A			WW	770(+74)
	Deer Range Miss Rad 850F	CCCC Red Ultimate 39D			YW	(+108)
		Pheasantdale Whip 156A				
		Deer Range Miss Rad 883C				

CHAROLAIS

Gilliland Brothers Charolais, Carievale SK

Lots 97-112

Ron Gilliland 306-482-8089 gilliland.brothers@gmail.com or Dayna & Greg Gilliland 306-928-4841 gdgilliland@sasktel.net

97	G.Bros Phantom RGCG 120H	MC807582	BD	30/01/2020
	RGCG 120H	Horned	BW	89(+0.5)
	Gerrard San Diego 13C		WW	760(+47)
	Gerrard Cleveland 24E	Gerrard Evetta 37B	YW	(+82)
	G.Bros Fate RGCG 877F	G.Bros Universal 361D G.Bros Loretta 167W		

98	G.Bros XXL RGCG 125H	PMC807537	BD	05/02/2020
	RGCG 125H	Polled	BW	96(+1.8)
	DCR MRU148 Gamechanger Z173		WW	765(+47)
	G.Bros Bells and Whistles 198B	G.Bros Miss 685Z	YW	(+91)
	G.Bros Elevated RGCG 851E	ACC I Am Legend 914W HC Rebecca 510R		

99	G.Bros Big Bucks RGCG 137H	PMC807581	BD	14/02/2020
	RGCG 137H	Polled	BW	95(+0.8)
	Pleasant Dawn Chisum 216A		WW	795(+53)
	G.Bros Cash 612F	G.Bros Sophia 329D	YW	(+105)
	G.Bros Quite-a-Gal 721D	Sunrise Sunburst 21Y G.Bros Genesis 432B		

100	G.Bros Majesty RGCG 150H	PMC807682	BD	29/02/2020
	RGCG 150H	Polled	BW	93(-0.1)
	Circle Cee Legend 307A		WW	770(+50)
	LAE Clyde 527C	MNE 2 Cute 4 U 6T	YW	(+99)
	G.Bros She's Soo Fine 704D	Sparrows Escobar 429B G.Bros Loretta 167W		

101	G.Bros Impact RGCG 62G	PMC784421	BD	09/03/2019
	RGCG 62G	Polled	BW	103(+3.0)
	DCR MRU148 Gamechanger Z173		WW	680(+48)
	G.Bros Bells and Whistles 198B	G.Bros Miss 685Z	YW	(+100)
	G.Bros Savannah 542C	Steppler Tandem 157A G.Bros Serena 186X		

102	G.Bros Moony 1205H	PMC807558	BD	23/02/2020
	DBLG 1205	Polled	BW	98(+1.9)
	SHSH HD 14Y		WW	(+37)
	High Bluff Diesel 25D	P-3 MS Specialist 1-100Y	YW	(+70)
	G.Bros Mandy 621Y	ACC I Am Legend 914W G.Bros Caraway 539W		



Lot 102



Lot 103

103	G.Bros Harlen 1141H	PMC807572	BD	18/01/2020
	DBLG 1141H	Polled	BW	92(+0.7)
	SHSH HD 14Y		WW	(+37)
	High Bluff Diesel 25D	P-3 MS Specialist 1-100Y	YW	(+72)
	G.Bros Zula 332D	Steppler Tandem 157A G.Bros Caraway 539W		

104	G.Bros Cage 1161H	PMC807545	BD	27/01/2020
	DBLG 1161H	Polled	BW	99(+2.4)
	SHSH HD 14Y		WW	(+40)
High Bluff Diesel 25D	P-3 MS Specialist 1-100Y		YW	(+77)
G.Bros Miss 742Z	SOS MB Syndicated 138P			
	Gilliland White Lace 306U			



105	G.Bros Playboy 1176H	PMC807548	BD	07/02/2020
	DBLG 1176H	Polled	BW	98(+0.7)
	SHSH HD 14Y		WW	(+41)
High Bluff Diesel 25D	P-3 MS Specialist 1-100Y		YW	(+76)
G.Bros Harmony 529W	Beaver Creek Red Zone 211S			
	Gilliland Bros Star 11P			

106	G.Bros Mad Dog 1152H	PMC807664	BD	24/01/2020
	DBLG 1152H	Polled	BW	96(+0.3)
	Sparrows Escobar 429B		WW	(+46)
G.Bros Mayhem RCGC 783E	G.Bros Petra 284Z		YW	(+96)
G.Bros Astrid 310C	DCR MRU148 Gamechanger Z173			
	Gilliland Breta 20R			

107	G.Bros Diablo 1166H	PMC808600	BD	01/02/2020
	DBLG 1166H	Polled	BW	92(+3.8)
	Gerrard Pastor 35Z		WW	(+46)
PCC Pastor 409B	Prairie Cove Miss 3Y		YW	(+89)
G.Bros Cassidy 312C	KCH Red Label 15X			
	Grant's Ms Dateline 310A			

108	G.Bros Dooley 1173H	PMC8087547	BD	05/02/2020
	DBLG 1173H	Polled	BW	93(+0.6)
	Gerrard Pastor 35Z		WW	(+47)
PCC Pastor 409B	Prairie Cove Miss 3Y		YW	(+84)
G.Bros Paige 363D	WR Wrangler W601			
	G.Bros Special Dam 187B			

109	G.Bros Hudson 1214H	PMC8087567	BD	05/03/2020
	DBLG 1214H	Polled	BW	108(+2.6)
	LAE Clyde 527C		WW	(+46)
G.Bros Revolution RGCG 872F	G.Bros Polly RGCG 539C		YW	(+93)
G.Bros Miss Lina 116B	KCH Red Label 15X			
	G.Bros Bone China 913X			

110	G.Bros Starman 1218H	PMC8087560	BD	05/03/2020
	DBLG 1218H	Polled	BW	96(+0.9)
	Circle Cee Legend 307A		WW	(+48)
LAE Clyde 527C	MNE 2 Cute 4 U 6T		YW	(+90)
G.Bros Miss 289C	HBSF Specialist 108U			
	G.Bros Rose 212T			

111	G.Bros Harlow 1228H	PMC8087569	BD	20/03/2020
	DBLG 1228H	Polled	BW	105(+3.8)
	HRJ Crowd Favourite 515C		WW	(+50)
SVY Fortress 703E	SVY Startstruck 409B		YW	(+96)
G.Bros Miss 277C	G.Bros Hawg Wild 861A			
	G.Bros Lioness 928X			

112	G.Bros Hayden 1238H	PMC8087565	BD	20/03/2020
	DBLG 1238H	Polled	BW	98(+0.7)
	Sparrows Escobar 429B		WW	(+52)
	G.Bros Universal 361D	G.Bros Miss 736Z	YW	(+98)
	G.Bros Emma 379D	Winn Mans 988A G.Bros Miss 176B		

Phillips Farms Charolais, Estevan SK **Lots 113-115**

Kurtis & Kristy Phillips 306-421-6416 kphillips@saskpower.com

113	PFC Henrick 11H	PMC802536	BD	20/01/2020
	PFC 11H	Polled	BW	96(+0.1)
	CML Encore 4Y		WW	(+28)
	Elder's Candid 75C	Elder's Mayflower 947W	YW	(+69)
	JWX Britta 292B	SVY Kaboom Pld 7113T JWX Zera 912Z		

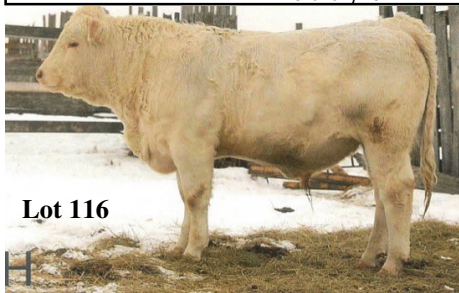
114	PFC Hudson 27H	QPMC802530	BD	02/02/2020
	PFC 27H	Red Factor	BW	94(-0.7)
	CML Encore 4Y		WW	(+36)
	Elder's Candid 75C	Elder's Mayflower 947W	YW	(+79)
	PFC Miss Brianna 409B	SRK Solid 12U JWX Rouge 4Z		

115	PFC Hawkeye 38H	PMC802551	BD	26/02/2020
	PFC 38H	Polled	BW	97(+0.8)
	HVA Baron 483D		WW	(+44)
	JWX Finale 371F	JWX Junior Express 710A	YW	(+84)
	PFC Esther 707E	G.Bros Hurricane 129B PFC Carmen 512C		

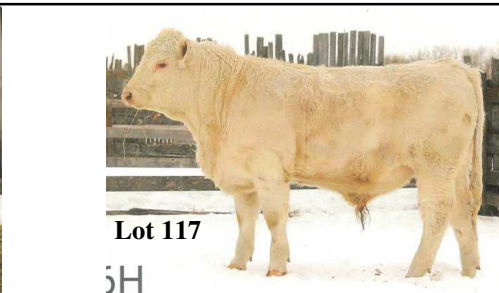
WPLB Charolais, Raymore SK **Lots 116-118**

Lydia Belinda 306-835-2612 wplb@sasktel.net

116	WPLB Class Master 4H	PMC791293	BD	13/03/2020
	WPLB 4H	Polled	BW	100(+2.1)
	HRJ Crowd Favourite 515C		WW	885(+39)
	SVY Wizard 707E	SVY Starstruck 409B	YW	(+75)
	WPLB Chiffon Baby 7C	HBC Dart 314A WPLB Chantilly 20A		



Lot 116



Lot 117

117	WPLB Mr Charmer 6H	PMC791299	BD	20/03/2020
	WPLB 6H	Polled	BW	92(-0.4)
	HRJ Crowd Favourite 515C		WW	885(+41)
	SVY Wizard 707E	SVY Starstruck 409B	YW	(+76)
	WPLB Miss Charmy 10C	HBC Dart 314A WPLB Charmy 6Y		

118	WPLB Mr Cool Cat 19G	PMC771589	BD	09/04/2019
	WPLB 19G	Polled	BW	105(+2.0)
	LT Ledger 0332P		WW	775(+46)
WPLB Big Time 14D	WPLB Bridget 1U		YW	(+97)
WPLB Miss Pretty 19C	HBC Dart 314A			
	WPLB Miss Dancer 7A			



Bar H Charolais, Grenfell SK **Lots 119-122**
 Kevin Haylock 306-697-8771 grenlock@sasktel.net

119	Bar H Grand Slam 18H	PMC791991	BD	27/01/2020
	BARH 18H	Polled	BW	107(-0.5)
	WC Doubletree 2009 P		WW	800(+41)
HRJ Maverick 556C	Pro-Char Cassy 32A		YW	(+81)
Bar H Stunning 137B	TR PZC Mr Turton 0794			
	GPA Martina 240M			
He is deep bodied, big butted son of calving ease sire Maverick. He will put some extra quarter on his calves earning you more \$.				

120	Bar H Hammer 25H	PMC791971	BD	03/02/2020
	BARH 25H	Polled	BW	98(-1.2)
	LT Bluegrass 4017 P		WW	680(+38)
Sunrise Sunburst 21Y	Bridor Wishlist 10W		YW	(+80)
Bar H Muffin 100A	LAE Texas 705T			
	Bar H Shadow 52W			
A Sunburst son with a great disposition and moderate BW. He has a -1.2 EPD for BW. He is smooth shouldered with a nice small head.				

121	Bar H Gibson 24H	PMC791970	BD	03/02/2020
	BARH 24H	Polled	BW	91(-1.3)
	LT Bluegrass 4017 P		WW	680(+40)
Sunrise Sunburst 21Y	Bridor Wishlist 10W		YW	(+79)
Bar H Lady Slipper 48D	Bar H Premium 41W			
	Bar H Blossom 48W			
Long, smooth made son of Sunrise Sunburst, who is still walking at our place at 10 years old.				

122	Bar H Honcho 28H	PMC791985	BD	26/02/2020
	BARH 28H	Polled	BW	113(+1.3)
	LT Bluegrass 4017 P		WW	730(+51)
Sunrise Sunburst 21Y	Bridor Wishlist 10W		YW	(+98)
Bar H Miss State 161B	Keys All State 149X			
	Bar H Amy 47Z			
Deep bodied, later birth date bull with bigger BW but has calving ease right through his pedigree with Bluegrass, Sunburst, & All State. A full brother this year had a 93lb BW.				

HEREFORD

Hereford GRLZ, Raymore SK

Lots 123-124

Rena Leier 306-730-8758 rena.hordos@live.ca

123	GRLZ Earthquake 30H	C03070014	BD	07/02/2020
	GRLZ 30H	Polled	BW	94(+3.1)
Elm-Lodge Earthshaker 22E WCC 42S Rita 3097A		CRR 719 Catapult 109 Elm-Lodge 25G Tiara 4T Remital Super Duty 42S Muddy 97L Sapphire 79M 97R	WW	650(+45)
			YW	1240(+73)



124	GRLZ Diablo 45G	C03058525	BD	10/01/2019
	GRLZ 45G	Polled	BW	86(+0.8)
NJW 144Y Diablo 180A WCC 245W Beauty 7245E		NJW 76S 4037 Durango Spirit 174X NJW 69S 38W Beefy Angie 144Y Square-D 42S Progress 323Y LJR Silvia 245W	WW	700(+47)
			YW	1310(+61)

Blair Athol Farms, Arcola SK

Lots 125-126

Duncan & Jeff Lees 306-455-2619 or 306-577-1375

125	Blair-Athol Special D 143H	C03075683	BD	16/04/2020
	DVL 143H	Polled	BW	78(+2.2)
NJW 103Y 174X Diablo 156C Blair-Athol 97B Raina 142D		NJW 76S 4037 Durango Spirit 174X NJW 101U 100W Spirit Queen 103Y NJW 73S 22Z Mighty Max 97B Rawcliffe 49T Randi 44Y	WW	654(+50)
			YW	(+80)
126	Blair-Athol 206 Last Call 61H	C03072894	BD	28/02/2020
	DVL 61H	Polled	BW	76(+2.0)
TH 13Y 358C Bottom Line 206E Blair-Athol 161 Katie 131A		TH 13Y 358C Bottom Line 206E TH 54W 719T Beth 13Y P Remital Heater 161U Haroldson's WLC 68M Katrina 33P	WW	698(+55)
			YW	(+93)

MAINE ANJOU

Pick Six Cattle, Gull Lake SK

Lots 127-128

Jordan Retzlaff 306-671-7557 Jordan.retzlaff@gmail.com

127	Pick Six Bojangles 038H	521905	BD	11/04/2020
	PICK 038H	75% Black Polled	BW	82
	RASA Mr Bojangles 232E	BPF Comfort Zone	WW	735
	SWM Wilkinridge Connie 1123B	Halle Berry 117Z Mr. Rusylvia Ty's Wizard 10W	YW	1145
		SWM Connie 427Y		

He is an exciting young bull that will add style and growth. Bulls are on a full herd health program, had Fusoguard and a recent application of Ivomec.



128	Pick Six Bojangles 34H	521968	BD	08/04/2020
	PICK 034H	75% Black Polled	BW	90
	RASA Mr Bojangles 232E	BPF Comfort Zone	WW	755
	GVC Jazzmyn 37B	Halle Berry 117Z GVC Closing Bell 10U	YW	1165
		Miss Green Valley 603S		

Both of these bulls are sons of the 2017 CWA Champion RASA Mr. Bojangles 232E. 34H is our of one of the very best cows on the place, and a full brother is a walking sire for us!

Terms & Conditions

- All purchases must be paid for the day of the auction and bulls will not be released until full settlement is made. Payment can be made with Cash, Cheque (with sufficient identification), Debit (make sure your daily limit is high enough), or Credit Card (3% admin fee charged and check your limit).
- All bulls are guaranteed by the consignors under the rules & regulations as set by the Saskatchewan Cattle Breeders' Association. Johnstone Auction Mart is acting as an agent only, and any warranties are to be settled between buyer and seller. An insurance agent will be on site to insure your bulls.
- All announcements from the auction block and printed day sheets take precedence over information in this catalogue, please give them your careful attention.
- The auctioneer will settle any disputes between two people claiming the same bid.
- Registration papers will be transferred to the buyer at the seller's expense. When you make settlement, please tell office staff which name you want the papers transferred to.
- Phone or proxy bids must be arranged with Johnstone Auction Mart or sale staff by May 25.
- Delivery: There is no delivery program at this sale, so please arrange to haul your bulls on your own unless you **pre-arrange** delivery with the consignor who's bull you plan on buying.

Consignment Machinery, Vehicles, Tools

Saturday, June 12, 2021 10:00 AM

and Saturday, July 24, 2021 10:00 AM

at Johnstone Auction Mart, Moose Jaw SK

UPDATES / PICTURES AT www.johnstoneauction.ca

We expect a lots more by sale day!

Tractors / Farm Machinery / Trucks / Cars / RV / Livestock Equipment

Check website listings right up to the night before the auction, many items are not booked ahead!

Watch for updates on how the sale will be conducted if limiting Covid restrictions are still in place!